



**BORING BARS**



**2019 Catalog**

World-class products

Precise quality

Satisfied customer

ZERTIFIKAT ♦ CERTIFICATE ♦ 認証証書 ♦ CERTIFICADO ♦ CERTIFICAT



# CERTIFICATE

The Certification Body  
of TÜV SÜD South Asia Private Limited  
certifies that



**Falcon Toolings**  
SF No -205/1 & 2, Kuttai Thottam, Kalapatti post  
Coimbatore- 641048, Tamil Nadu, INDIA

has implemented a Quality Management System  
in accordance with ISO 9001:2015  
For Scope of

**Design, Development, Manufacturing & Supply of Toolings**

The certificate is valid in conjunction  
with the main-certificate from 2018-01-20 until 2021-01-19  
Subject to successful completion of annual periodic audits  
The present status of this Certificate can be obtained on [www.tuv.sud.in](http://www.tuv.sud.in)  
Further clarifications regarding the scope of this certificate may be obtained by consulting the certification body

Certificate Registration No. **99 100 10587/01**

Date of Initial certification : 2015-01-20

Certification Body  
of TÜV SÜD South Asia Private Limited, Mumbai  
Member of TÜV SÜD Group

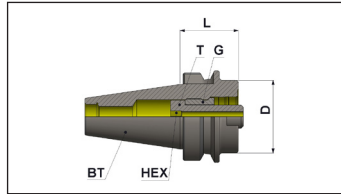
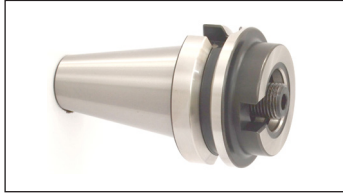




# BORING BARS

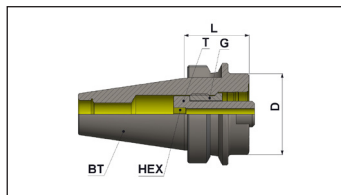
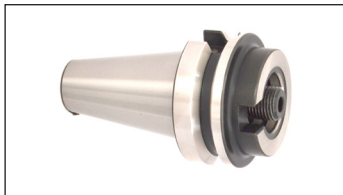
## BT Master Holder

### BT 30 – Form AD



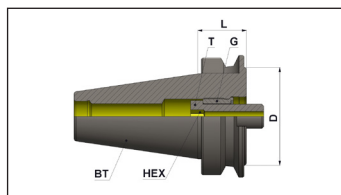
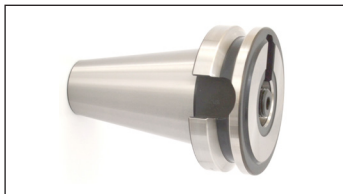
Part No.	Product name	D	L	G	T	Hex	Kgs	Group
F1B301X-MOD50050	BT 30 AD MOD 50 050	50	50	M25X1.5-LH	M16X1.5	10	0.7	A

### BT 40 – Form AD



Part No.	Product name	D	L	G	T	Hex	Kgs	Group
F1B401X-MOD50040	BT 40 AD MOD 50 040	50	40	M25X1.5-LH	M16X1.5	10	1.1	A
F1B401X-MOD63050	BT 40 AD MOD 63 050	63	50	M30X1.5-LH	M20X2	10	1.3	A
F1B401X-MOD80050	BT 40 AD MOD 80 050	80	50	M30X1.5-LH	M20X2	10	1.5	A

### BT 50 – Form AD

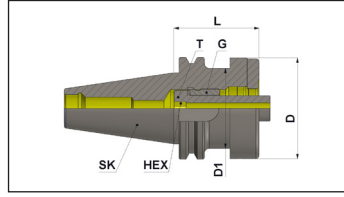


Part No.	Product name	D	L	G	T	Hex	Kgs	Group
F1B501X-MOD50040	BT 50 AD MOD 50 040	50	40	M25X1.5-LH	M16X1.5	10	3.5	A
F1B501X-MOD63040	BT 50 AD MOD 63 040	63	40	M30X1.5-LH	M20X2	10	3.5	A
F1B501X-MOD80040	BT 50 AD MOD 80 040	80	40	M30X1.5-LH	M20X2	10	3.6	A

# BORING BARS

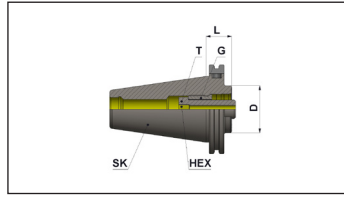
## SK Master Holder

### SK 40 – Form AD



Part No.	Product name	D	L	G	T	Kgs	Hex	Group
F1S401X-MOD50040	SK 40 AD MOD 50 040	50	40	M25X1.5-LH	M16X1.5	1.1	10	B
F1S401X-MOD63050	SK 40 AD MOD 63 050	63	50	M30X1.5-LH	M20X2	1.4	10	B

### SK 50 – Form AD

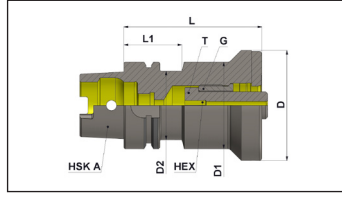


Part No.	Product name	D	L	G	T	Kgs	Hex	Group
F1S501X-MOD50027	SK 50 AD MOD 50 027	50	27	M25X1.5-LH	M16X1.5	2.6	10	B
F1S501X-MOD63027	SK 50 AD MOD 63 027	63	27	M30X1.5-LH	M20X2	2.7	10	B
F1S501X-MOD80027	SK 50 AD MOD 80 027	80	27	M30X1.5-LH	M20X2	2.8	10	B

# BORING BARS

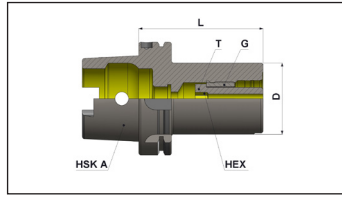
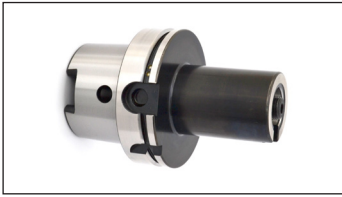
## HSK Master Holder

### HSK A63



Part No.	Product name	D	D1	D2	L	L1	G	T	Hex	Kgs	Group
F1A063X-MOD50090	HSK A63 MOD50 090	50	63	-	90	-	M25X1.5-LH	M16X1.5	7	1.5	B
F1A063X-MOD63100	HSK A63 MOD63 100	63	63	50	100	42	M30X1.5-LH	M20X2	7	2.1	B
F1A063X-MOD80100	HSK A63 MOD80 100	80	63	50	100	42	M30X1.5-LH	M20X2	7	2.6	B

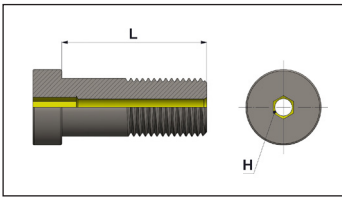
### HSK A100



Part No.	Product name	D	L	G	T	Hex	Kgs	Group
F1A100X-MOD50100	HSK A100 MOD50 100	50	100	M25X1.5-LH	M16X1.5	10	2.9	B
F1A100X-MOD63110	HSK A100 MOD63 110	63	110	M30X1.5-LH	M20X2	10	3.7	B
F1A100X-MOD80110	HSK A100 MOD80 110	80	110	M30X1.5-LH	M20X2	10	4.9	B

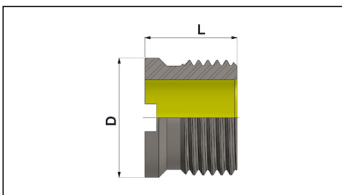
## Spares

### Vari lock screw



Part No.	Product name	Hex	L
F1VSWM-07M16	VARI LOCK STOPPER SCREW M16 X 1.5 - 7mm	7	40
F1VSWM-10M16	VARI LOCK STOPPER SCREW M16 X 1.5 - 10mm	10	40
F1VSWM-07M20	VARI LOCK STOPPER SCREW M20 X 2 - 7mm	7	50
F1VSWM-10M20	VARI LOCK STOPPER SCREW M20 X 2 - 10mm	10	50

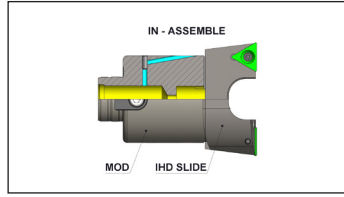
### Retaining nut



Part No.	Product name	L
F1SWLM-25M25	LOCKING SCREW L.H. M25 X 1.5	20
F1SWLM-25M30	LOCKING SCREW L.H. M30 X 1.5	25

# BORING BARS

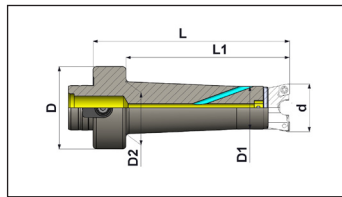
## Assembly



**Note:**

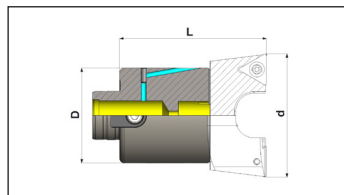
- Insert holder to be order separately
- Select insert holder as per boring range
- Quantity "2 Nos" required per every boring bar
- For, Insert holder refer page No: 9

## Modular50 RBB - Range (25 - 70)



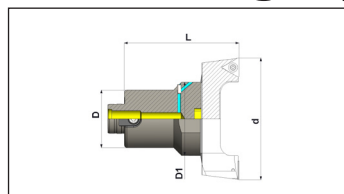
Part No.	Product name	D	D1	D2	L	L1	Boring Range - d	Kgs	Group
F1MD50X-025032090	MOD 50 D 025 - 032 L 090	50	21	24	90	70	25 - 32	0.7	B
F1MD50X-030038110	MOD 50 D 030 - 038 L 110	50	26	32	110	90	30 - 38	0.7	B
F1MD50X-037047110	MOD 50 D 037 - 047 L 110	50	34	-	110	90	37 - 47	0.9	B
F1MD50X-046056110	MOD 50 D 046 - 056 L 110	50	42	-	110	90	46 - 56	1.2	B
F1MD50X-055070085	MOD 50 D 055 - 070 L 085	50	-	-	85	-	55 - 70	1.1	B

## Modular63 RBB - Range (69 - 101)



Part No.	Product name	D	L	Boring Range - d	Kgs	Group
F1MD63X-069101090	MOD 63 D 069 - 101 L 090	63	90	69 - 85 83-101	1.9	B

## Modular80 RBB - Range (99 - 270)

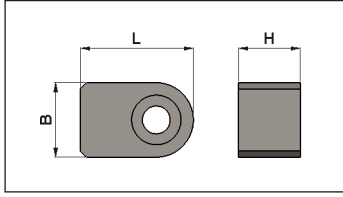


Part No.	Product name	D	D1	L	Boring Range - d	Kgs	Group
F1MD80X-099150125	MOD 80 D 099 - 150 L 125	80	80	125	99 - 126 123 - 150	4.2	B
F1MD80X-148270125	MOD 80 D 148 - 270 L 125	80	110	125	148 - 190 188 - 230 228 - 270	6.6	B

# BORING BARS

## Spares

### Driving Key

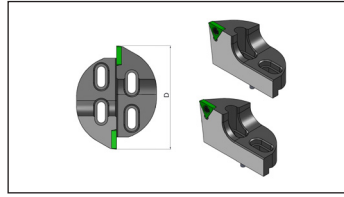


Part No.	Product name	B	H	L	Allen Screw
F1DRKY-12S27	DRIVING KEY 12 27	12	10	18.3	M4
F1DRKY-16S40	DRIVING KEY 16 40	16	16	24	M6
F1DRKY-16M63	DRIVING KEY MOD63 16 40	16	13	24	M6



# BORING BARS

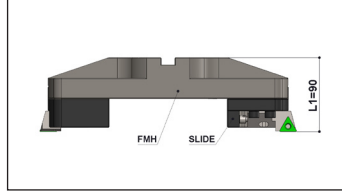
## Insert Holders



Part No.	Product name	Boring Range - d	Insert Type	Torque for Tightening Slide	Allen Screw for Slide Locking	Insert Screw	Torque for Tightening Insert screw
F1IHDRX-025032C06	INSERT HOLDER DIA 025 - 032 CCMT 06	25 - 32	CCMT 06 02 08	4.8	M4X10	(M2.5)	0.9
F1IHDRX-030038C06	INSERT HOLDER DIA 030 - 038 CCMT 06	30 - 38	CCMT 06 02 08	4.8	M4X10	(M2.5)	0.9
F1IHDRX-037047T11	INSERT HOLDER DIA 037 - 047 TCMT11	37 - 47	TCMT 11 02 08	4.8	M4X20	(M2.5)	0.9
F1IHDRX-046056T16	INSERT HOLDER DIA 046 - 056 TCMT16	46 - 56	TCMT 16 T3 08	9	M5X25	(M3.5)	3
F1IHDRX-055070T16	INSERT HOLDER DIA 055 - 070 TCMT16	55 - 70	TCMT 16 T3 08	16	M6X30	(M3.5)	3
F1IHDRX-069085T16	INSERT HOLDER DIA 069 - 085 TCMT16	69 - 85	TCMT 16 T3 08	16	M6X30	(M3.5)	3
F1IHDRX-083101T16	INSERT HOLDER DIA 083 - 101 TCMT16	83 - 101	TCMT 16 T3 08	16	M6X30	(M3.5)	3
F1IHDRX-083101T22	INSERT HOLDER DIA 083 - 101 TCMT22	83 - 101	TCMT 22 04 08	16	M6X30	(M5.0)	3
F1IHDRX-099126T16	INSERT HOLDER DIA 099 - 126 TCMT16	99 - 126	TCMT 16 T3 08	38	M8X25	(M3.5)	3
F1IHDRX-099126T22	INSERT HOLDER DIA 099 - 126 TCMT22	99 - 126	TCMT 22 04 08	38	M8X25	(M5.0)	3
F1IHDRX-123150T16	INSERT HOLDER DIA 123 - 150 TCMT16	123 - 150	TCMT 16 T3 08	38	M8X25	(M3.5)	3
F1IHDRX-123150T22	INSERT HOLDER DIA 123 - 150 TCMT22	123 - 150	TCMT 22 04 08	38	M8X25	(M5.0)	3
F1IHDRX-148190T16	INSERT HOLDER DIA 148 - 190 TCMT16	148 - 190	TCMT 16 T3 08	75	M10X30	(M3.5)	3
F1IHDRX-148190T22	INSERT HOLDER DIA 148 - 190 TCMT22	148 - 190	TCMT 22 04 08	75	M10X30	(M5.0)	3
F1IHDRX-188230T16	INSERT HOLDER DIA 188 - 230 TCMT16	188 - 230	TCMT 16 T3 08	75	M10X30	(M3.5)	3
F1IHDRX-188230T22	INSERT HOLDER DIA 188 - 230 TCMT22	188 - 230	TCMT 22 04 08	75	M10X30	(M5.0)	3
F1IHDRX-228270T16	INSERT HOLDER DIA 228 - 270 TCMT 16	228 - 270	TCMT 16 T3 08	75	M10X30	(M3.5)	3
F1IHDRX-228270T22	INSERT HOLDER DIA 228 - 270 TCMT 22	228 - 270	TCMT 22 04 08	75	M10X30	(M5.0)	3

# BORING BARS

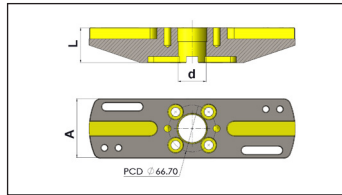
## Assembly



**Note:**

- Slide to be ordered separately
- Slide "2Nos" required per one boring bar
- Cartridge to be ordered separately

## Rough Boring Bars

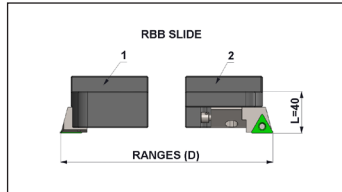
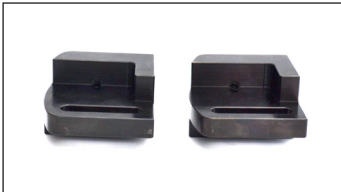


Part No.	Product name	d.	A	L	(D) RANGE	PCD	Slide Part No.	Kgs	Group
F1FM40X-346250300	FLANGE TYPE HD RBB 250 – 300	40	85	50	250 – 300	66.7	F13320X-346250300	4.2	B
F1FM40X-346300350	FLANGE TYPE HD RBB 300 – 350	40	85	50	300 – 350	66.7	F13320X-346300350	4.5	B
F1FM40X-346350400	FLANGE TYPE HD RBB 350 - 400	40	85	50	350 – 400	66.7	F13320X-346350400	4.9	B

**Note:**

Please use Dia 40 Face Mill Arbors - Flange Type For Mounting

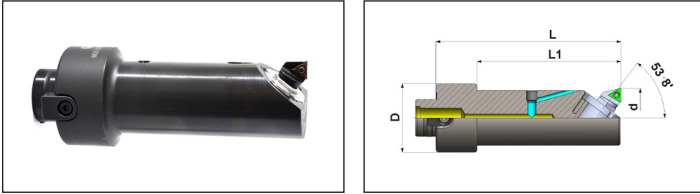
## Slide – Rough Boring Bars



Part No.	Product name	L	(D) RANGE	Insert Type	Cartridge	Entering Angle
F13320X-346250300	3320 ROUGH BORING BAR 250 – 300	40	250 – 300	TNMG 22 04 08 / SNMG 15 06 12	PTGNL20CA22 / PSRNL20CA15	90° / 75°
F13320X-346300350	3320 ROUGH BORING BAR 300 – 350	40	300 – 350	TNMG 22 04 08 / SNMG 15 06 12	PTGNL20CA22 / PSRNL20CA15	90° / 75°
F13320X-346350400	3320 ROUGH BORING BAR 350 – 400	40	350 – 400	TNMG 22 04 08 / SNMG 15 06 12	PTGNL20CA22 / PSRNL20CA15	90° / 75°

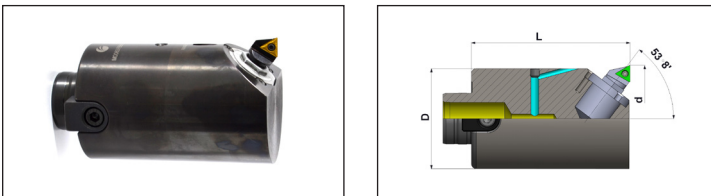
# BORING BARS

## Modular50 FBB - Range (25 - 70)



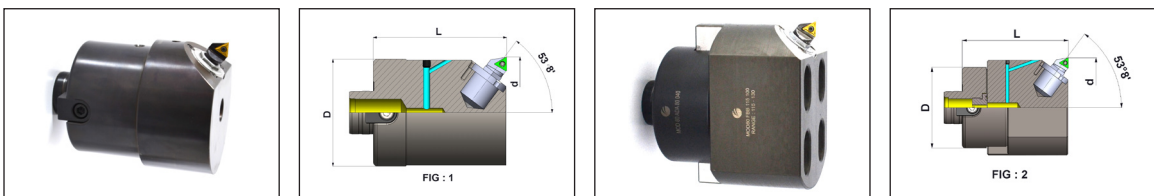
Part No.	Product name	D	L	L1	Boring Range - d	Catrdige as Per Sandvik	Insert Type	Kgs	Group
F1MD50X-FBB025110	MOD50 FINISH BORING BAR 25 110	50	110	80	25 - 28	L 148 C 31 06 T1 / L148 C 31 06 02	TCMT 06 T1/ CCMT 06 02	0.8	B
F1MD50X-FBB028110	MOD50 FINISH BORING BAR 28 110	50	110	80	28 - 31	L 148 C 31 06 T1 / L148 C 31 06 02	TCMT 06 T1/ CCMT 06 02	0.8	B
F1MD50X-FBB031120	MOD50 FINISH BORING BAR 31 120	50	120	90	31 - 34	L 148 C 31 06 T1 / L148 C 31 06 02	TCMT 06 T1/ CCMT 06 02	0.8	B
F1MD50X-FBB034120	MOD50 FINISH BORING BAR 34 120	50	120	90	34 - 39	L 148 C 32 09 02	TCMT 09 02 04	1.0	B
F1MD50X-FBB039120	MOD50 FINISH BORING BAR 39 120	50	120	90	39 - 44	L 148 C 32 09 02	TCMT 09 02 04	1.1	B
F1MD50X-FBB044120	MOD50 FINISH BORING BAR 44 120	50	120	90	44 - 52	L 148 C 33 11 02	TCMT 11 02 04	1.3	B
F1MD50X-FBB052100	MOD50 FINISH BORING BAR 52 100	50	100	-	52 - 60	L 148 C 33 11 02	TCMT 11 02 04	1.3	B
F1MD50X-FBB060100	MOD50 FINISH BORING BAR 60 100	50	100	-	60 - 68	L 148 C 33 11 02	TCMT 11 02 04	1.9	B

## Modular63 FBB - Range (69 - 101)



Part No.	Product name	D	L	Boring Range - d	Catrdige as Per Sandvik	Insert Type	Kgs	Group
F1MD63X-FBB068100	MOD63 FINISH BORING BAR 68 100	63	100	68 - 76	L 148 C 33 11 02	TCMT 11 02 04	2.4	B
F1MD63X-FBB076100	MOD63 FINISH BORING BAR 76 100	63	100	76 - 84	L 148 C 33 11 02	TCMT 11 02 04	2.7	B

## Modular80 FBB - Range (99 - 270)



Part No.	Product name	D	L	L1	Boring Range - d	Catrdige as Per Sandvik	Insert Type	FIG	Kgs	Group
F1MD80X-FBB084100	MOD80 FINISH BORING BAR 84 100	80	100	-	84 - 92	L 148 C 33 11 02	TCMT 11 02 04	1	3.8	B
F1MD80X-FBB092100	MOD80 FINISH BORING BAR 92 100	80	100	-	92 - 100	L 148 C 33 11 02	TCMT 11 02 04	1	4.0	B
F1MD80X-FBB100100	MOD80 FINISH BORING BAR 100 100	80	100	-	100-115	L 148 C 33 11 02	TCMT 11 02 04	2	2.6	B
F1MD80X-FBB115100	MOD80 FINISH BORING BAR 115 100	80	100	-	115 - 130	L 148 C 33 11 02	TCMT 11 02 04	2	2.9	B
F1MD80X-FBB130100	MOD80 FINISH BORING BAR 130 100	80	100	-	130 - 145	L 148 C 33 11 02	TCMT 11 02 04	2	3.2	B
F1MD80X-FBB145100	MOD80 FINISH BORING BAR 145 100	80	100	-	145 - 160	L 148 C 33 11 02	TCMT 11 02 04	2	3.5	B

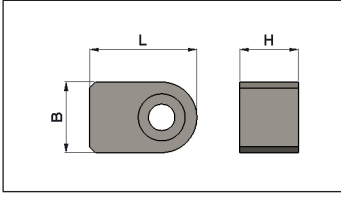
**Note:**

- Fine boring catrdige (Order seperately)

# BORING BARS

## Spares

### Driving Key



Part No.	Product name	B	H	L	Allen Screw
F1DRKY-12S27	DRIVING KEY 12 27	12	10	18.3	M4
F1DRKY-16S40	DRIVING KEY 16 40	16	16	24	M6
F1DRKY-16M63	DRIVING KEY MOD63 16 40	16	13	24	M6

# BORING BARS

## Assembly

### Type - A

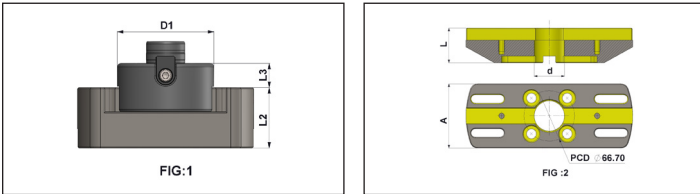


### Type - B



- Note:**
- Slide to be ordered separately
  - Cartridge to be ordered separately

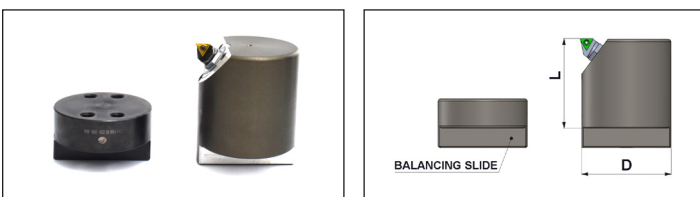
## Finish Boring Bars



Part No.	Product name	d.	D1	A	L	L2	L3	PCD	Boring Range	OD-Turning Range	Slide Part No.	FIG	InAssembly	Kgs	Group
F1MD80X-344150175	MOD80 HDFBB 150 – 175	-	80	85	-	50	20	-	150-175	40-65	F13320X-344150225	1	Type A	3.5	B
F1MD80X-344175200	MOD80 HDFBB 175 – 200	-	80	85	-	50	20	-	175-200	65-90	F13320X-344150225	1	Type A	4.5	B
F1MD80X-344200225	MOD80 HDFBB 200 – 225	-	80	85	-	50	20	-	200-225	90-115	F13320X-344150225	1	Type A	4.6	B
F1FM40X-344225250	FLANGE TYPE HD FBB 225 – 250	40	-	85	50	-	-	66.7	225-250	75-100	F13320X-344225550	2	Type B	5.4	B
F1FM40X-344250275	FLANGE TYPE HD FBB 250 – 275	40	-	85	50	-	-	66.7	250-275	100-125	F13320X-344225550	2	Type B	5.5	B
F1FM40X-344275300	FLANGE TYPE HD FBB 275 – 300	40	-	85	50	-	-	66.7	275-300	125-150	F13320X-344225550	2	Type B	5.6	B
F1FM40X-344300325	FLANGE TYPE HD FBB 300 – 325	40	-	85	50	-	-	66.7	300-325	150-175	F13320X-344225550	2	Type B	5.9	B
F1FM40X-344325350	FLANGE TYPE HD FBB 325 – 350	40	-	85	50	-	-	66.7	325-350	175-200	F13320X-344225550	2	Type B	6	B

- Note:**  
Please use Dia 40 Face Mill Arbors - Flange Type For Mounting

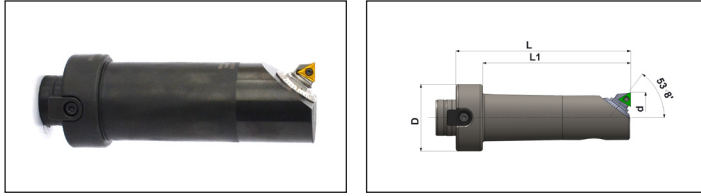
## Slide – Finish Boring Bars



Part No.	Product name	D	L	Boring Range	OD-Turning Range	Cartridge as per Sandvik
F13320X-344150225	CH FINISH BORING BAR 150 225	50	65	150 – 225	40 – 115	L 148 C 33 11 02
F13320X-344225550	CH FINISH BORING BAR 225 550	70	70	225 – 550	75 – 200	L 148 C 33 11 02

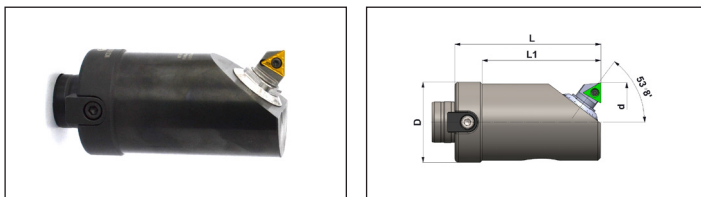
# BORING BARS

## Modular50 BCA - Range (23 - 66)



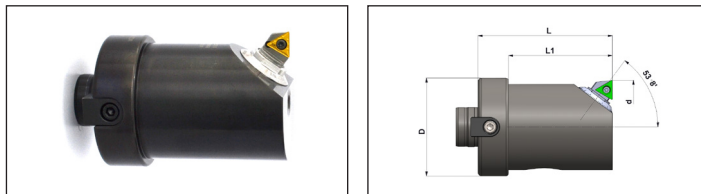
Part No.	Product name	D	L	L1	Boring Range - d	Micro Bore Unit (Catridge)	Kgs	Group
F1MD50X-BCA023110	MOD50 MICRO BORING BAR 023 110	50	110	90	23-29	M3 B2 CCMT	0.6	B
F1MD50X-BCA029130	MOD50 MICRO BORING BAR 029 130	50	130	110	29-39	M3 A2 CCMT	0.8	B
F1MD50X-BCA038130	MOD50 MICRO BORING BAR 038 130	50	130	110	38-49	M5 B2 TCMT	1.1	B
F1MD50X-BCA046130	MOD50 MICRO BORING BAR 046 130	50	130	110	46-66	M5 A2 TCMT	1.5	B

## Modular63 BCA - Range (62 - 87)



Part No.	Product name	D	L	L1	Boring Range - d	Micro Bore Unit (Catridge)	Kgs	Group
F1MD63X-BCA062115	MOD63 MICRO BORING BAR 062 115	63	115	95	62-87	M7 A2 TCMT	2.3	B

## Modular80 BCA - Range (83 - 142)



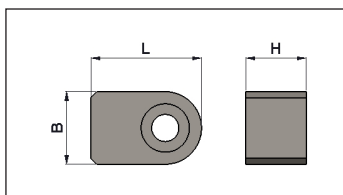
Part No.	Product name	D	L	L1	Boring Range - d	Micro Bore Unit (Catridge)	Kgs	Group
F1MD80X-BCA083110	MOD80 MICRO BORING BAR 083 110	80	110	85	83-108	M7 A2 TCMT	3.1	B
F1MD80X-BCA098115	MOD80 MICRO BORING BAR 098 115	80	115	85	98-142	M10 A2 TCMT	3.3	B

### Note:

- Micro bore cartridge to be order seperately
- For, Cartridge please refer page No: 15

## Spares

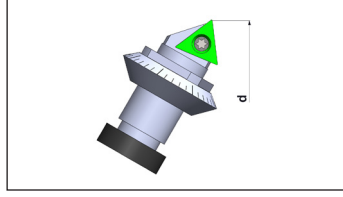
### Driving Key



Part No.	Product name	B	H	L	Allen Screw
F1DRKY-12S27	DRIVING KEY 12 27	12	10	18.3	M4
F1DRKY-16S40	DRIVING KEY 16 40	16	16	24	M6
F1DRKY-16M63	DRIVING KEY MOD63 16 40	16	13	24	M6

# BORING BARS

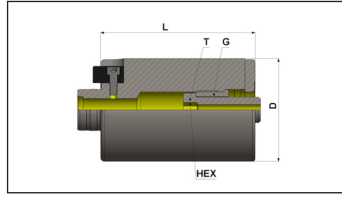
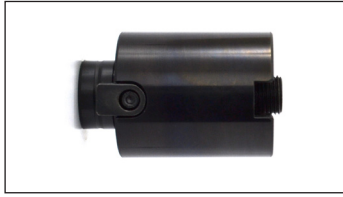
## Finish Boring Catridges-BCA Type



Part No.	Product name	Boring Range - d	Group
F1M03B2CCMT06	Catridge M03 B2 CCMT06	23 - 29	B
F1M03A2CCMT06	Catridge M03 A2 CCMT06	29 - 39	B
F1M05B2TCMT11	Catridge M05 B2 TCMT11	38 - 49	B
F1M05A2TCMT11	Catridge M05 A2 TCMT11	46 - 66	B
F1M07A2TCMT11	Catridge M07 A2 TCMT11	62 - 87 83 - 108	B
F1M07A2TCMT16	Catridge M07 A2 TCMT16	62 - 87 83 - 108	B
F1M10A2TCMT11	Catridge M10 A2 TCMT11	98 - 142	B
F1M10A2TCMT16	Catridge M10 A2 TCMT16	98 - 142	B

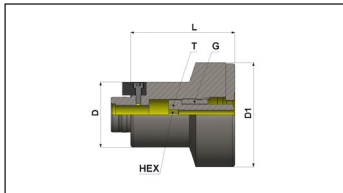
# BORING BARS

## Extensions



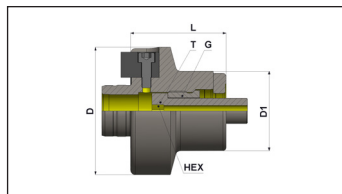
Part No.	Product name	D	L	G	T	Hex	Kgs	Group
F1MD50X-EXT050060	MOD50 BORING BAR EXTENSION 050 060	50	60	M25X1.5-LH	M16X1.5	10	0.8	A
F1MD50X-EXT050080	MOD50 BORING BAR EXTENSION 050 080	50	80	M25X1.5-LH	M16X1.5	10	1.0	A
F1MD50X-EXT050100	MOD50 BORING BAR EXTENSION 050 100	50	100	M25X1.5-LH	M16X1.5	10	1.3	A
F1MD63X-EXT063080	MOD63 BORING BAR EXTENSION 063 080	63	80	M30X1.5-LH	M20X2	10	1.6	A
F1MD63X-EXT063100	MOD63 BORING BAR EXTENSION 063 100	63	100	M30X1.5-LH	M20X2	10	2.1	A
F1MD63X-EXT063120	MOD63 BORING BAR EXTENSION 063 120	63	120	M30X1.5-LH	M20X2	10	2.7	A
F1MD80X-EXT080080	MOD80 BORING BAR EXTENSION 080 080	80	80	M30X1.5-LH	M20X2	10	2.8	A
F1MD80X-EXT080100	MOD80 BORING BAR EXTENSION 080 100	80	100	M30X1.5-LH	M20X2	10	3.4	A
F1MD80X-EXT080120	MOD80 BORING BAR EXTENSION 080 120	80	120	M30X1.5-LH	M20X2	10	4.2	A
F1MD80X-EXT080160	MOD80 BORING BAR EXTENSION 080 160	80	160	M30X1.5-LH	M20X2	10	6.3	A

## Expansions



Part No.	Product name	D	D1	L	G	T	Hex	Kgs	Group
F1MD50X-EXP063080	MOD50 BORING BAR EXPANSION 063 080	50	63	80	M30X1.5-LH	M20X2	10	1.3	A
F1MD63X-EXP080080	MOD63 BORING BAR EXPANSION 080 080	63	80	80	M30X1.5-LH	M20X2	10	2	A

## Reductions

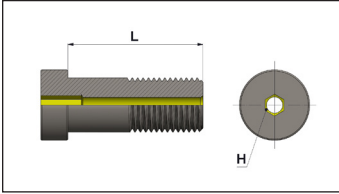


Part No.	Product name	D	D1	L	G	T	Hex	Kgs	Group
F1MD63X-RED050060	MOD63 BORING BAR REDUCTION 050 060	63	50	60	M25X1.5-LH	M16X1.5	10	0.9	A
F1MD80X-RED050060	MOD80 BORING BAR REDUCTION 050 060	80	50	60	M25X1.5-LH	M16X1.5	10	1.6	A
F1MD80X-RED063080	MOD80 BORING BAR REDUCTION 063 080	80	63	80	M30X1.5-LH	M20X2	10	2	A



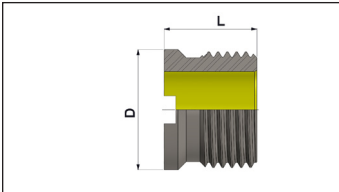
## Spares

### Vari lock screw



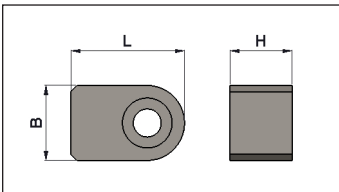
Part No.	Product name	Hex	L
F1VSWM-07M16	VARI LOCK STOPPER SCREW M16 X 1.5 - 7mm	7	40
F1VSWM-10M16	VARI LOCK STOPPER SCREW M16 X 1.5 - 10mm	10	40
F1VSWM-07M20	VARI LOCK STOPPER SCREW M20 X 2 - 7mm	7	50
F1VSWM-10M20	VARI LOCK STOPPER SCREW M20 X 2 - 10mm	10	50

### Retaining nut



Part No.	Product name	L
F1SWLM-25M25	LOCKING SCREW L.H. M25 X 1.5	20
F1SWLM-25M30	LOCKING SCREW L.H. M30 X 1.5	25

### Driving Key



Part No.	Product name	B	H	L
F1DRKY-12S27	DRIVING KEY 12 27	12	10	18.3
F1DRKY-16S40	DRIVING KEY 16 40	16	16	24
F1DRKY-16M63	DRIVING KEY MOD63 16 40	16	13	24



**Falcon**®

# ***Falcon Toolings***

SF. No. 205 / 1 & 2, Kalapatti, Coimbatore - 641 048, India

Ph : +91 (422) 266 6156 , +91 (422) 266 6322

Email : [sales@falcontoolings.com](mailto:sales@falcontoolings.com)

Web: [www.falcontoolings.com](http://www.falcontoolings.com)