



DMC SLIM CHUCK



2023 Catalog

DMC SLIM CHUCK

Table of contents

Description	Page
DMC - SLIM CHUCK	
MAS BT-ISO7388-2	5
BT30.....	5
BT40.....	5
BT50.....	5
PLBT (FACE CONTACT)	6
PLBT30	6
PLBT40	6
PLBT50	6
HSK A - (DIN 69893)	7
HSK A50.....	7
HSK A63.....	7
SK ISO7388-1	7
SK40	7
CYS DC SLIM CHUCK	8
ACCESSORIES	8
COLLET	8
ALLEN KEY.....	9

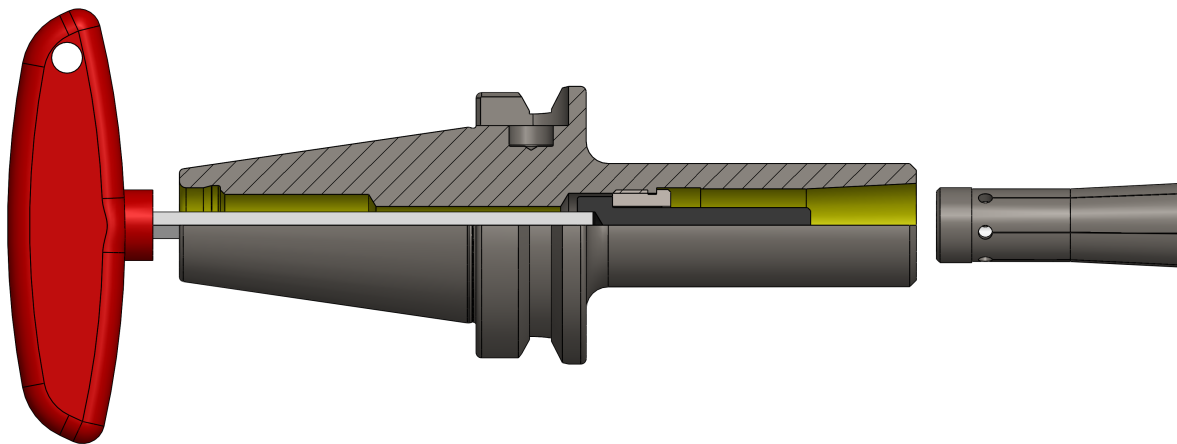
DMC SLIM CHUCK

DIE & MOULD CHUCK

Die & Mould chuck is a specialized type of clamp used to hold an object with radial symmetry, especially a cylinder.

Features:

- Slender Outside diameter for machine Pockets are different to reach
- Due to this simple structure can reduces interference and more stable while processing
- Mostly used in Die and Mould industry
- Run out accuracy within 0.005 mm at 4 times of cutting edge length
- Longer Tool life
- Balanced at 2.5G @ 25000 RPM



DIE & MOULD CHUCKS are available in following shank

- BT(MAS 403)
- PLBT (FACE-CONTACT)
- HSK A(69893)
- SK(DIN69871)
- Cylindrical Shank

Clamping Range

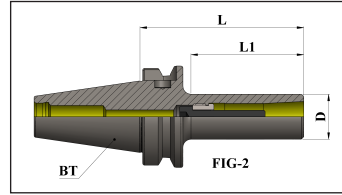
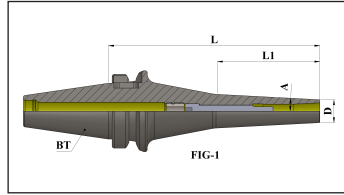
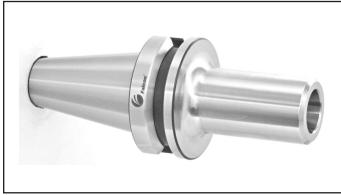
- DMC 06 (2mm to 6 mm)
- DMC 08 (3 mm to 8 mm)
- DMC 12 (3mm to 12 mm)

Balancing G2.5 @ 25000 RPM

DMC SLIM CHUCK

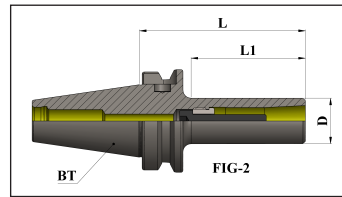
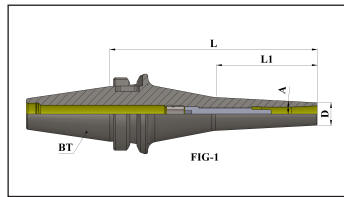
MAS BT-ISO7388-2

BT30



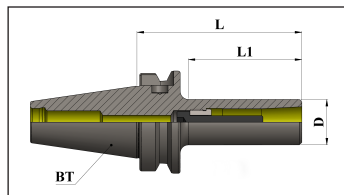
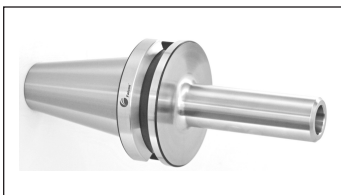
Part No.	Product name	Taper	D	Clamping range	L	L1	A	Screw detail	Allen Key	Kgs	FIG	Group
F1B301H-DMC06060	BT30 AD DC 06 060	BT30	13	2-6	60	26	3	M5	4x100	0.44	1	B1000
F1B301H-DMC06090	BT30 AD DC06 090	BT30	13	2-6	90	50	3	M5	4x100	0.5	1	B1000
F1B301H-DMC06120	BT30 AD DC 06 120	BT30	13	2-6	120	60	3	M5	4x100	0.58	1	B1000
F1B301H-DMC12070	BT30 AD DC 12 070	BT30	34	3-12	70	44	-	M10	8x100	0.53	2	B1000

BT40



Part No.	Product name	Taper	D	Clamping range	L	L1	A	Screw detail	Allen Key	Kgs	FIG	Group
F1B401H-DMC06060	BT40 AD DC06 060	BT40	13	2-6	60	26	3	M5	4x100	0.90	1	B1000
F1B401H-DMC06090	BT40 AD DC 06 090	BT40	13	2-6	90	45	3	M5	4x100	1.00	1	B1000
F1B401H-DMC06120	BT40 AD DC 06 120	BT40	13	2-6	120	60	3	M5	4x150	1.20	1	B1000
F1B401H-DMC06160	BT40 AD DC 06 160	BT40	13	2-6	160	76	3	M5	4x150	2.84	1	B1000
F1B401H-DMC08090	BT40 AD DC 08 090	BT40	22	3-8	90	53	3	M6	5x100	1.10	1	B1000
F1B401H-DMC08120	BT40 AD DC 08 120	BT40	22	3-8	120	65	3	M6	5x150	1.30	1	B1000
F1B401H-DMC12070	BT40 AD DC 12 070	BT40	34	3-12	70	38	3	M10	8x100	1.00	2	B1000
F1B401H-DMC12090	BT40 AD DC 12 090	BT40	34	3-12	90	55	-	M10	8x100	1.20	2	B1000
F1B401H-DMC12120	BT40 AD DC 12 120	BT40	34	3-12	120	88	-	M10	8x150	1.40	2	B1000
F1B401H-DMC12150	BT40 AD DC 12 150	BT40	34	3-12	150	118	-	M10	8x150	1.50	2	B1000

BT50



Part No.	Product name	Taper	D	Clamping range	L	L1	A	Screw detail	Allen Key	Kgs	Group
F1B501H-DMC12110	BT50 AD DC 12 110	BT50	34	3-12	110	64	-	M10	8x150	3.80	B1000
F1B501H-DMC12150	BT50 AD DC 12 150	BT50	34	3-12	150	104	-	M10	8x200	4.00	B1000

Balancing G2.5 @ 25000 RPM

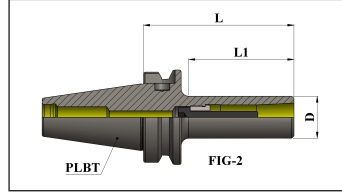
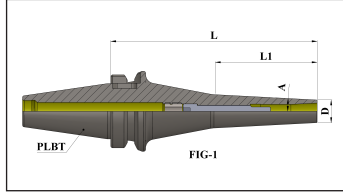


DMC SLIM CHUCK

DMC SLIM CHUCK

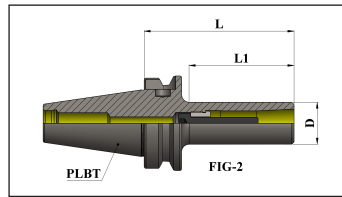
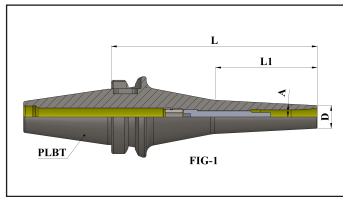
PLBT (FACE CONTACT)

PLBT30



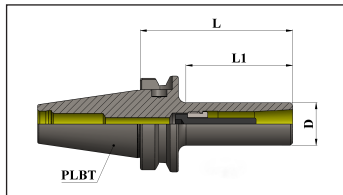
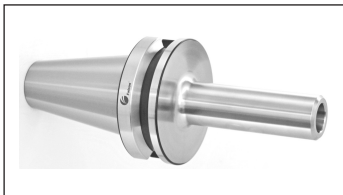
Part No.	Product name	Taper	D	Clamping range	L	L1	A	Screw detail	Allen Key	Kgs	FIG	Group
F1B321H-DMC06060	PLBT30 DC06 060	30	13	2-6	60	26	3	M5	4x100	0.45	1	B1000
F1B321H-DMC06090	PLBT30 DC06 090	30	13	2-6	90	50	3	M5	4x100	0.5	1	B1000
F1B321H-DMC06120	PLBT30 DC06 120	30	13	2-6	120	60	3	M5	4x100	0.651	1	B1000
F1B321H-DMC12070	PLBT30 DC12 070	30	34	3-12	70	44	-	M10	8x100	0.63	2	B1000

PLBT40



Part No.	Product name	Taper	D	Clamping range	L	L1	A	Screw detail	Allen Key	Kgs	FIG	Group
F1B421H-DMC06060	PLBT40 DC06 060	40	13	2-6	60	26	3	M5	4x100	1.00	1	B1000
F1B421H-DMC06090	PLBT40 DC06 090	40	13	2-6	90	45	3	M5	4x100	1.20	1	B1000
F1B421H-DMC06120	PLBT40 DC06 120	40	13	2-6	120	60	3	M5	4x150	1.30	1	B1000
F1B421H-DMC06160	PLBT40 DC06 160	40	13	2-6	160	76	3	M5	4x150	2.94	1	B1000
F1B421H-DMC08090	PLBT40 DC08 090	40	22	3-8	90	53	3	M6	5x100	1.20	1	B1000
F1B421H-DMC08120	PLBT40 DC08 120	40	22	3-8	120	65	3	M6	5x150	1.40	1	B1000
F1B421H-DMC12070	PLBT40 DC12 070	40	34	3-12	70	38	3	M10	8x100	1.10	2	B1000
F1B421H-DMC12090	PLBT40 DC12 090	40	34	3-12	90	55	-	M10	8x100	1.30	2	B1000
F1B421H-DMC12120	PLBT40 DC12 120	40	34	3-12	120	88	-	M10	8x150	1.40	2	B1000
F1B421H-DMC12150	PLBT40 DC12 150	40	34	3-12	150	118	-	M10	8x150	1.60	2	B1000

PLBT50



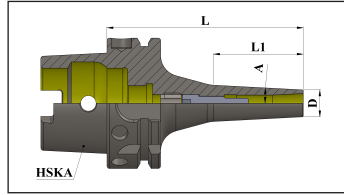
Part No.	Product name	Taper	D	Clamping range	L	L1	A	Screw detail	Allen Key	Kgs	Group
F1B521H-DMC12100	PLBT50 AD DC 12 110	50	34	3-12	110	64	-	M10	8x150	3.90	B1000
F1B521H-DMC12150	PLBT50 AD DC 12 150	50	34	3-12	150	104	-	M10	8x200	4.10	B1000

Balancing G2.5 @ 25000 RPM

DMC SLIM CHUCK

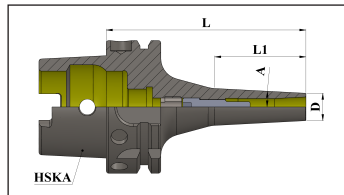
HSK A - (DIN 69893)

HSK A50



Part No.	Product name	Taper	D	Clamping range	L	L1	A	Screw detail	Allen Key	Kgs	Group
F1A050H-DMC06075	HSK A50 DC 06 075	A50	13	2-6	75	46	3	M5	4X100	0.45	B1000

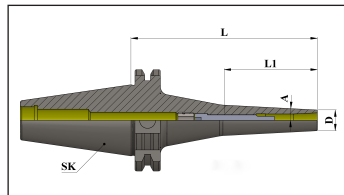
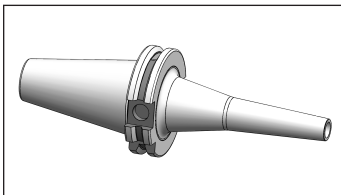
HSK A63



Part No.	Product name	Taper	D	Clamping range	L	L1	A	Screw detail	Allen Key	Kgs	Group
F1A063H-DMC06075	HSK A63 DC 06 075	A63	13	2-6	75	46	3	M5	4X100	0.7	B1000
F1A063H-DMC06095	HSK A63 DC 06 095	A63	13	2-6	95	45	3	M5	4X100	0.76	B1000
F1A063H-DMC06120	HSK A63 DC 06 120	A63	13	2-6	120	53	3	M5	4X100	0.83	B1000
F1A063H-DMC06160	HSK A63 DC 06 160	A63	13	2-6	160	80	3	M5	4X100	0.92	B1000
F1A063H-DMC08100	HSK A63 DC 08 100	A63	22	3-8	100	58	3	M6	5X100	0.88	B1000
F1A063H-DMC08160	HSK A63 DC 08 160	A63	22	3-8	160	58	3	M6	5X150	1.21	B1000
F1A063H-DMC12120	HSK A63 DC 12 120	A63	34	3-12	120	55	-	M10	8X100	1.18	B1000

SK ISO7388-1

SK40

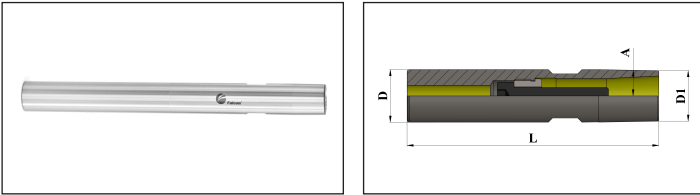


Part No.	Product name	Taper	D	Clamping range	L	L1	A	Screw detail	Allen Key	Kgs	Group
F1S401H-DMC06060	SK40 AD DC 06 060	SK40	13	2-6	60	25	3	M5	4X100	0.90	B1000
F1S401H-DMC06090	SK40 AD DC 06 090	SK40	13	2-6	90	48	3	M5	4X100	1.00	B1000
F1S401H-DMC06120	SK40 AD DC 06 120	SK40	13	2-6	120	62	3	M5	4X150	1.20	B1000
F1S401H-DMC06160	SK40 AD DC 06 160	SK40	13	2-6	160	88	3	M5	4X150	2.84	B1000
F1S401H-DMC08090	SK40 AD DC 08 090	SK40	22	3-8	90	53	3	M6	5X100	1.10	B1000
F1S401H-DMC08120	SK40 AD DC 08 120	SK40	22	3-8	120	65	3	M6	5X150	1.30	B1000
F1S401H-DMC08160	SK40 AD DC 08 160	SK40	22	3-8	160	90	3	M6	5X200	2.94	B1000

DMC SLIM CHUCK

DMC SLIM CHUCK

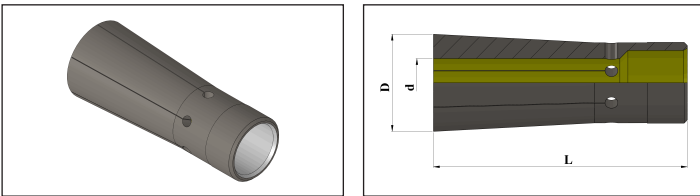
CYS DC SLIM CHUCK



Part No.	Product name	D	D1	Clamping range	L	A	Screw detail	Allen Key	Kgs	Group
F1CY16X-DMC06150	CYS16 DC 06 150	16	13	2-6	150	3	M5	4X100	0.18	B1000
F1CY20X-DMC06200	CYS20 DC 06 200	20	13	2-6	200	3	M5	4X100	0.35	B1000
F1CY25X-DMC06250	CYS25 DC 06 250	25	13	2-6	250	3	M5	4X150	0.65	B1000
F1CY20X-DMC08150	CYS20 DC 08 150	20	19	3-8	150	1	M6	5X100	0.24	B1000
F1CY20X-DMC08200	CYS20 DC 08 200	20	19	3-8	200	1	M6	5X150	0.33	B1000
F1CY32X-DMC12200	CYS32 DC 12 200	32	30	3-12	200	1	M10	8X100	0.96	B1000
F1CY32X-DMC12250	CYS32 DC 12 250	32	30	3-12	250	1	M10	8X200	1.24	B1000
F1CY32X-DMC12300	CYS32 DC 12 300	32	30	3-12	300	1	M10	8X200	1.52	B1000

ACCESSORIES

COLLET

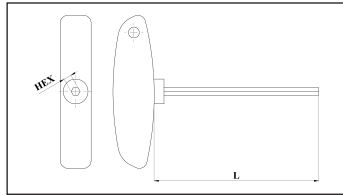
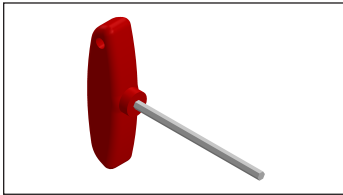


Part No.	Product name	d.	D	L	Group
F1DMCM-DC0603	DC COLLETS - STANDARD - METRIC DC06 03	3	9.6	36	D2500
F1DMCM-DC0604	DC COLLETS - STANDARD - METRIC DC06 04	4	9.6	36	D2500
F1DMCM-DC0606	DC COLLETS - STANDARD - METRIC DC06 06	6	9.6	36	D2500
F1DMCM-DC0803	DC COLLETS - STANDARD - METRIC DC08 03	3	15	45	D2500
F1DMCM-DC0804	DC COLLETS - STANDARD - METRIC DC08 04	4	15	45	D2500
F1DMCM-DC0806	DC COLLETS - STANDARD - METRIC DC08 06	6	15	45	D2500
F1DMCM-DC0808	DC COLLETS - STANDARD - METRIC DC08 08	8	15	45	D2500
F1DMCM-DC1203	DC COLLETS - STANDARD - METRIC DC12 03	3	22	60	D2500
F1DMCM-DC1204	DC COLLETS - STANDARD - METRIC DC12 04	4	22	60	D2500
F1DMCM-DC1206	DC COLLETS - STANDARD - METRIC DC12 06	6	22	60	D2500
F1DMCM-DC1208	DC COLLETS - STANDARD - METRIC DC12 08	8	22	60	D2500
F1DMCM-DC1210	DC COLLETS - STANDARD - METRIC DC12 10	10	22	60	D2500
F1DMCM-DC1212	DC COLLETS - STANDARD - METRIC DC12 12	12	22	60	D2500

Balancing G2.5 @ 25000 RPM

DMC SLIM CHUCK

ALLEN KEY



Part No.	Product name	L	Hex	Group
F1ALKY-100M04	ALLEN KEY	100	M04	B1500
F1ALKY-150M04	ALLEN KEY	150	M04	B1500
F1ALKY-100M05	ALLEN KEY	100	M05	B1500
F1ALKY-150M05	ALLEN KEY	150	M05	B1500
F1ALKY-200M05	ALLEN KEY	200	M05	B1500
F1ALKY-100M06	ALLEN KEY	100	M06	B1500
F1ALKY-150M06	ALLEN KEY	150	M06	B1500
F1ALKY-200M06	ALLEN KEY	200	M06	B1500
F1ALKY-100M08	ALLEN KEY	100	M08	B1500
F1ALKY-150M08	ALLEN KEY	150	M08	B1500
F1ALKY-200M08	ALLEN KEY	200	M08	B1500



Falcon Toolings

SF. No. 205 / 1 & 2, Kalapatti, Coimbatore - 641 048, India

Ph : +91 (422) 266 6156 , +91 (422) 266 6322

Email : sales@falcontoolings.com

Web: www.falcontoolings.com